



Ordering number C11347_REGINA

Family	Regina	FWHM	10 degrees
Type	Reflector	Efficiency	86 %
LED	XP-G	cd/lm	-
Color	Metal	Gerber File	Available
Diameter	19 mm		
Height	15.3 mm		
Style	Round		
Optic Material	PC		
Holder Material	-		
Fastening	Pin, glue		
Status	On production		

NOTE: The typical divergence will be changed by different color, chip size and chip position tolerance. The typical total divergence is the full angle measured where the luminous intensity is half of the peak value.



PRODUCT DATASHEET

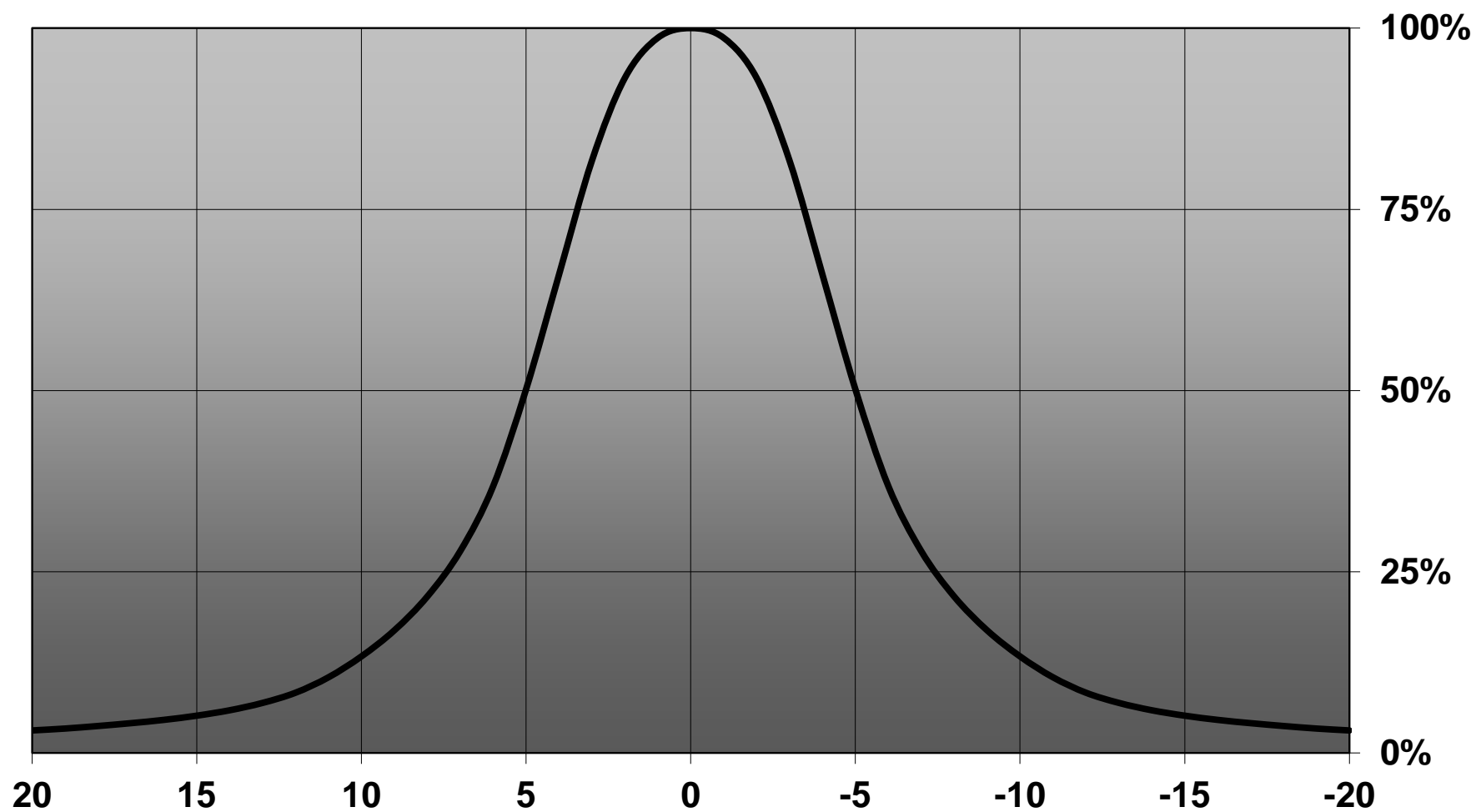
Regina series

last update 26/6/2013

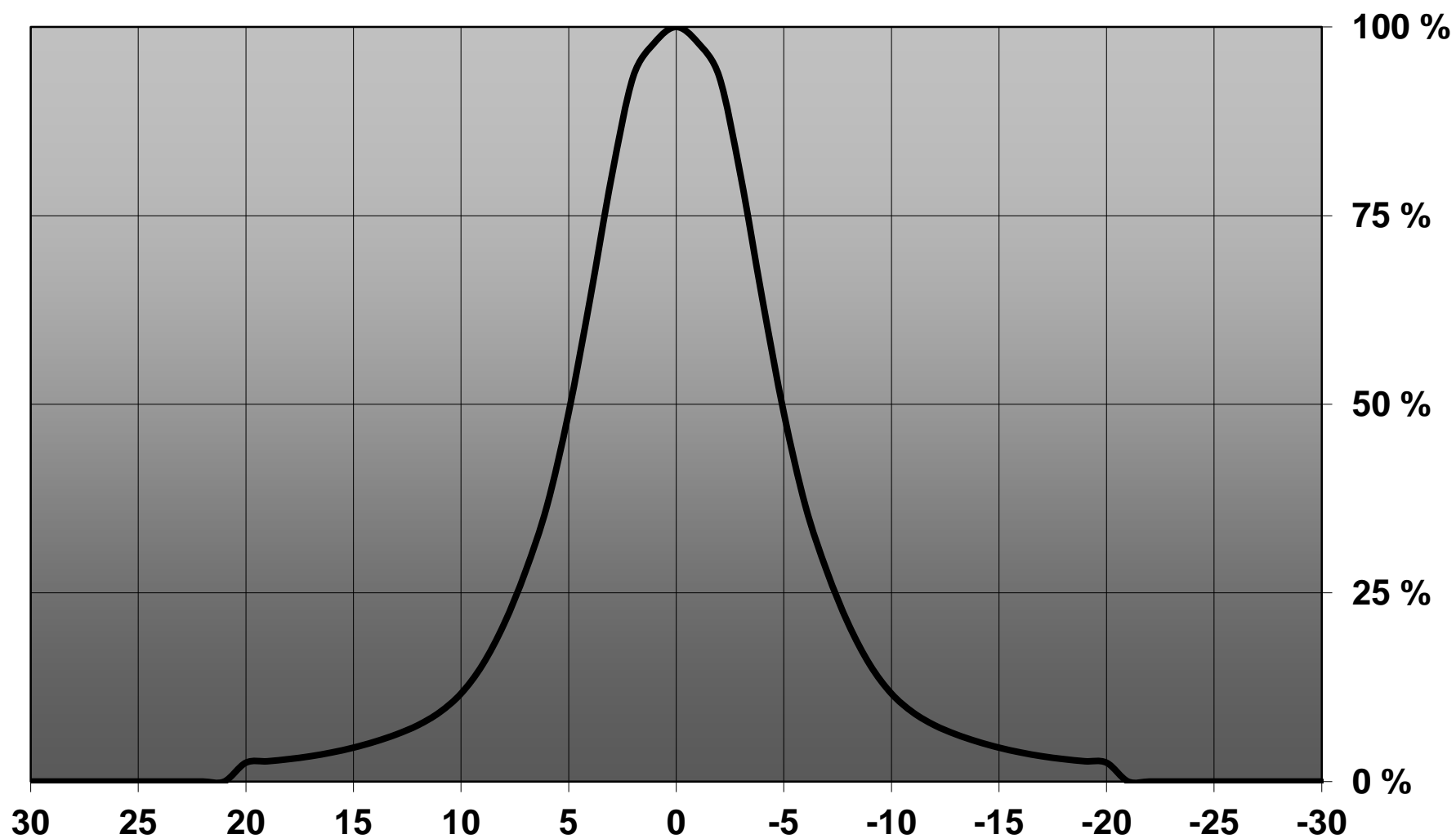
GENERAL INFORMATION

- Product series especially designed & optimized for XP-G series of LEDs.
- Special care taken to make light distribution as uniform as possible.
- Reflector is made of aluminium coated PC (120 degrees of Celcius / 248 degrees of Fahrenheit) with protective lacquer (110 degrees of Celcius / 230 degrees of Fahrenheit).

Relative intensity of C11347_Regina-RE-ES

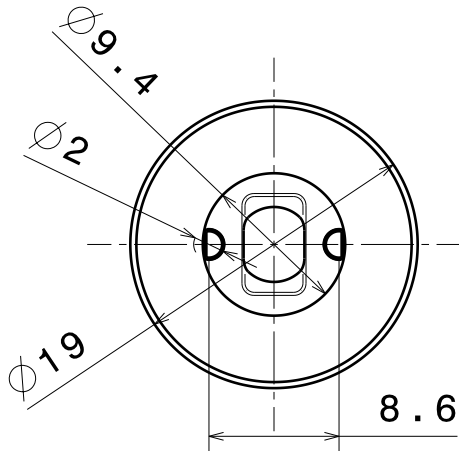


Relative Intensity of C11347_Regina-XP-G

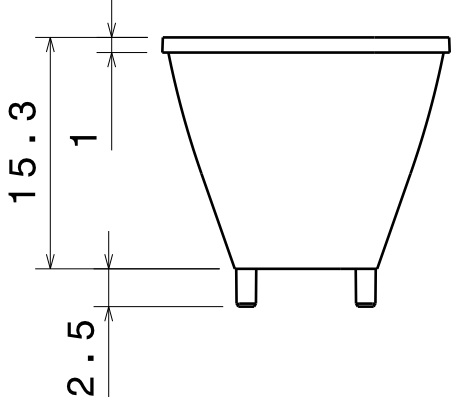




Isometric view
Scale: 1:1



Bottom view



Front view

Material: PC
with metal coating
and clear lacquer

This drawing is our property.
It can't be reproduced
or communicated without
our written agreement.



Ledil Oy
Tehdaskatu 13
FIN-24100 SALO
Finland

DRAWING TITLE

Datasheet Regina Reflector

DRAWN BY
pv
DATE
21.12.2009

CHECKED BY
hh
DATE
14.12.2009

DESIGNED BY
pv
DATE
19.11.2009

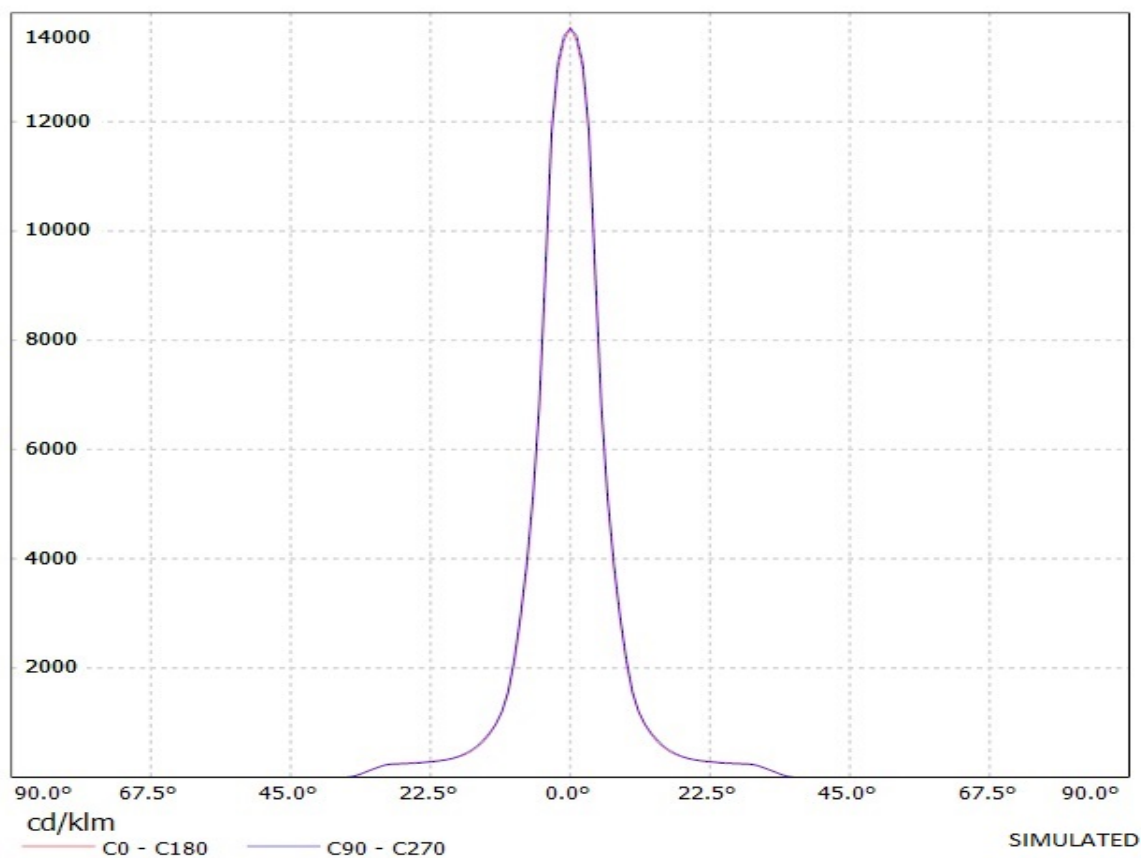
SIZE
A4
DRAWING NUMBER
C11347
REV
1

SCALE
2:1
WEIGHT (g)
SHEET
1 / 1

Ledil Oy C11347_Regina-XP-G C11347_Regina-XP-G / LDC (Linear)

Luminaire: Ledil Oy C11347_Regina-XP-G C11347_Regina-XP-G

Lamps: 1 x Cree XP-G (White)



Ledil Oy C11347_Regina-XP-G C11347_Regina-XP-G / LDC (Polar)

Luminaire: Ledil Oy C11347_Regina-XP-G C11347_Regina-XP-G
Lamps: 1 x Cree XP-G (White)

